



# GUÍA PRÁCTICA DE MÚSICA

*1er* AÑO

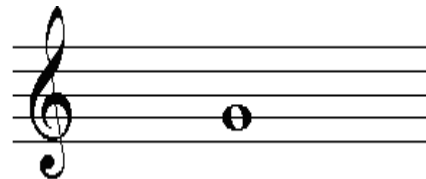
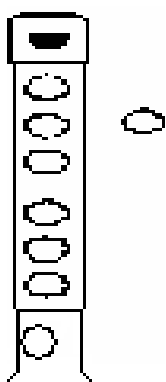
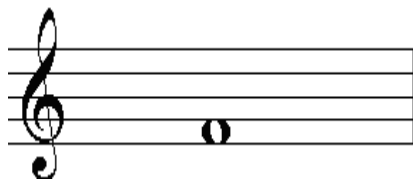
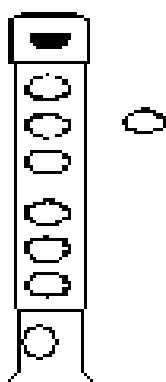
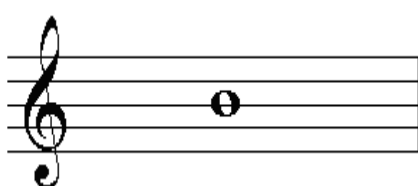
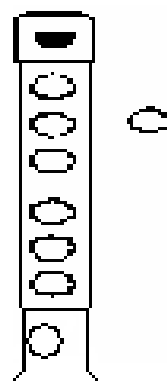
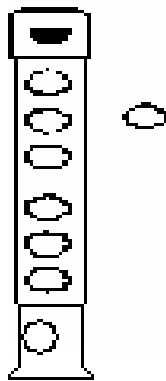
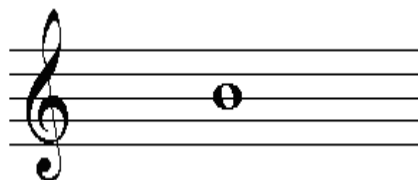
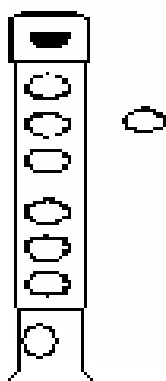
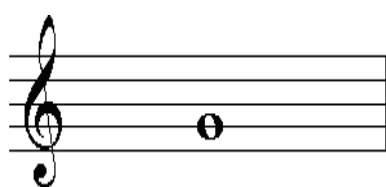


**EJERCICIOS Y MELODÍAS**  
**Cuaderno Pentagramado**  
**Hojas de Notas**

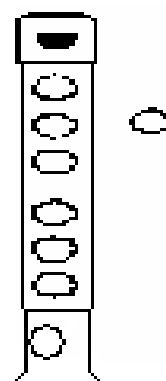
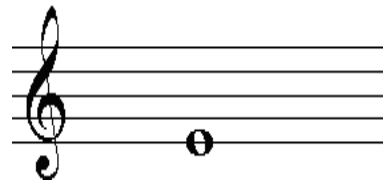
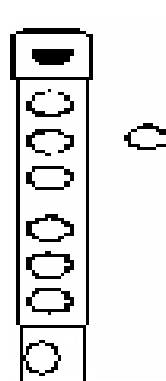
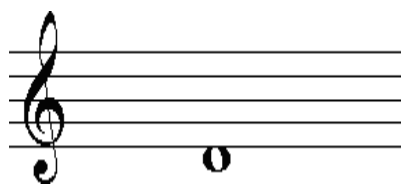
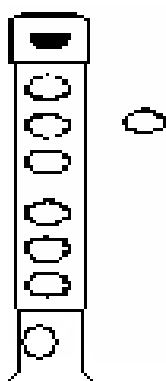
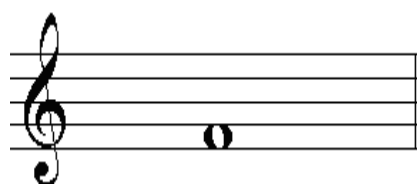
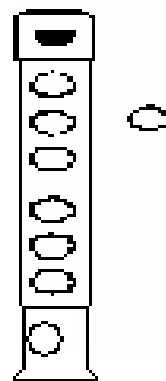
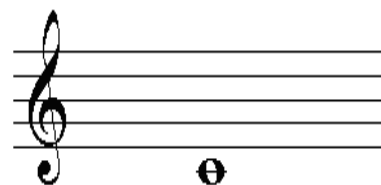
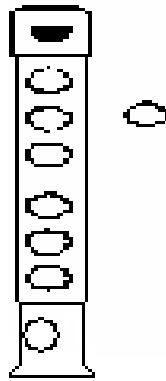
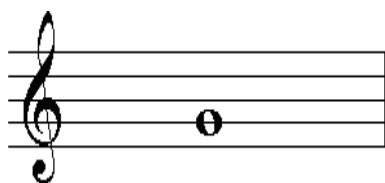
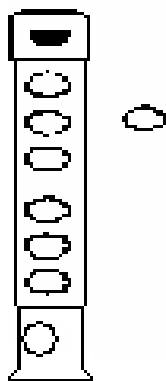
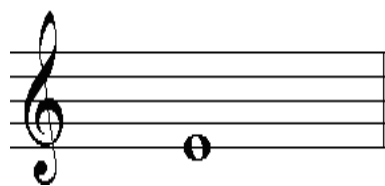
Luiggy Rojas

## LAS POSICIONES EN LA FLAUTA DULCE SOPRANO

Indica en los orificios de la flauta Dulce las notas representadas en los pentagramas:



Continuación:



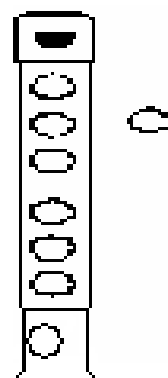
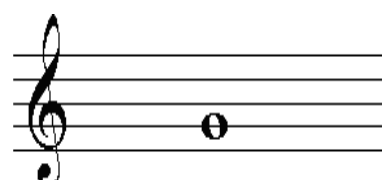
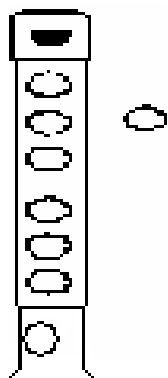
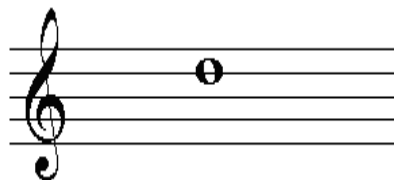
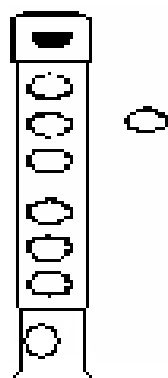
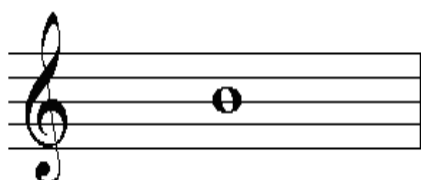
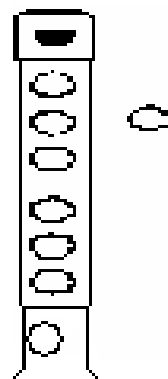
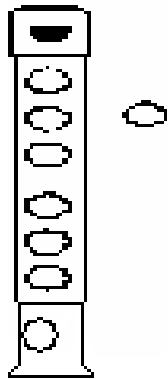
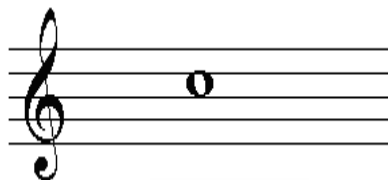
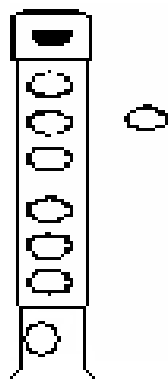
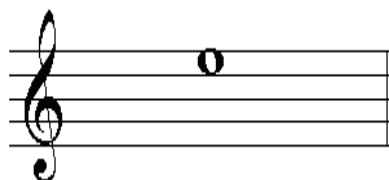
Continuación:

The first row shows three musical staves, each with a treble clef and a single note. Below each staff is a diagram of a recorder with a specific fingering pattern. The notes and their corresponding fingerings are: 1. Middle C (C4), with fingers 1, 2, 3, 4, 5, 6, 7, 8, 9, 10, 11, 12. 2. D4, with fingers 1, 2, 3, 4, 5, 6, 7, 8, 9, 10, 11, 12. 3. E4, with fingers 1, 2, 3, 4, 5, 6, 7, 8, 9, 10, 11, 12.

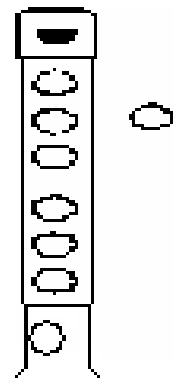
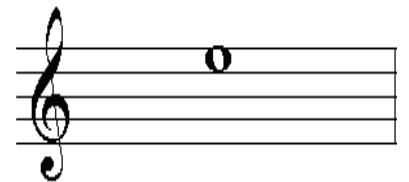
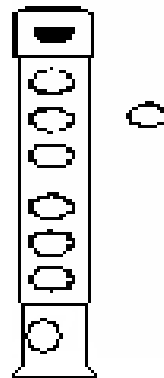
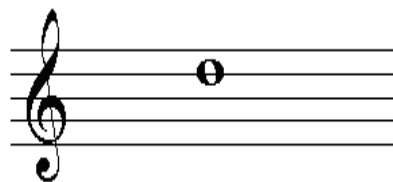
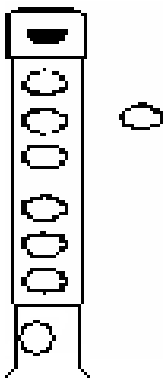
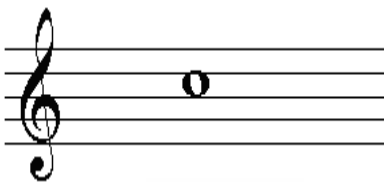
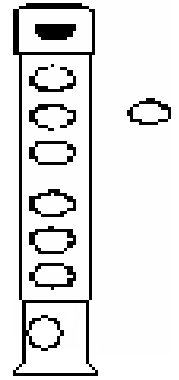
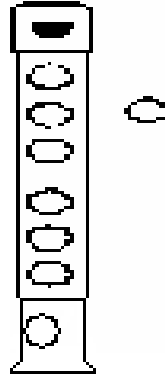
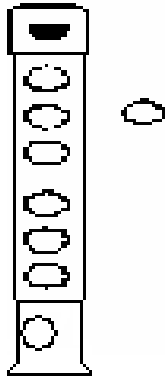
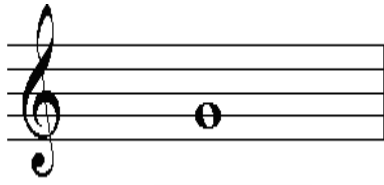
The second row shows three musical staves, each with a treble clef and a single note. Below each staff is a diagram of a recorder with a specific fingering pattern. The notes and their corresponding fingerings are: 4. F4, with fingers 1, 2, 3, 4, 5, 6, 7, 8, 9, 10, 11, 12. 5. G4, with fingers 1, 2, 3, 4, 5, 6, 7, 8, 9, 10, 11, 12. 6. A4, with fingers 1, 2, 3, 4, 5, 6, 7, 8, 9, 10, 11, 12.

## NOTAS AGUDAS EN LA FLAUTA DULCE SOPRANO:

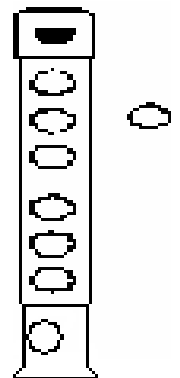
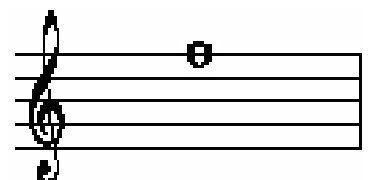
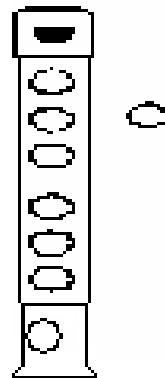
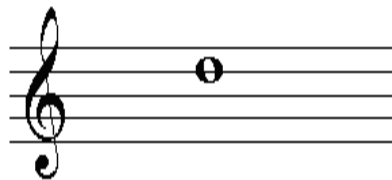
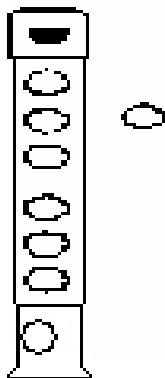
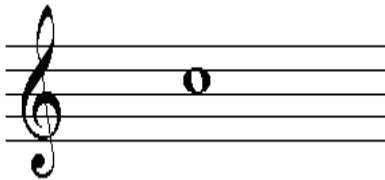
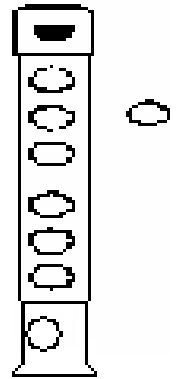
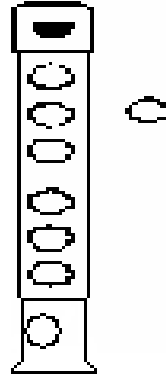
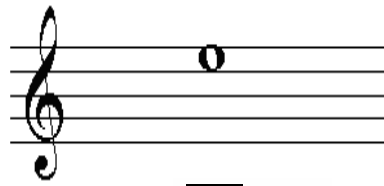
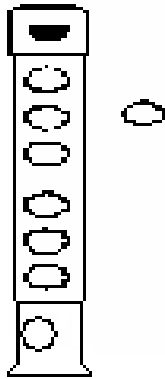
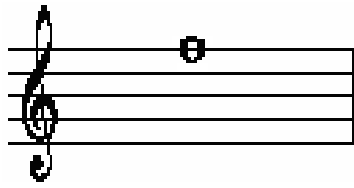
Indica en los orificios de la flauta Dulce las notas representadas en los pentagramas:



Continuación:

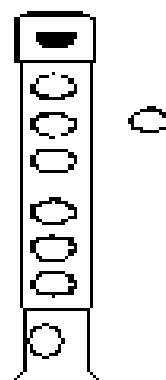
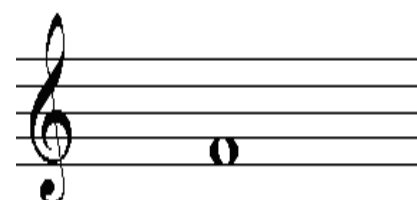
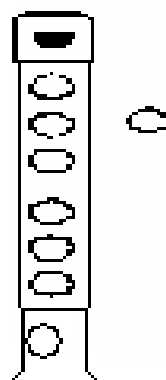
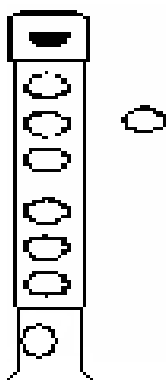
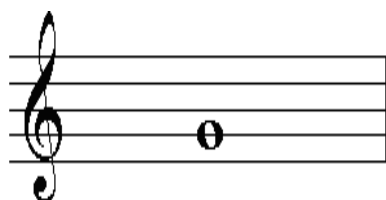
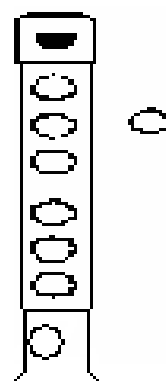
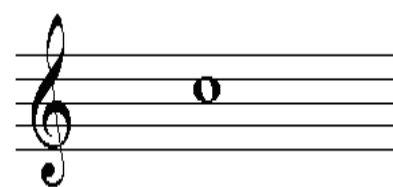
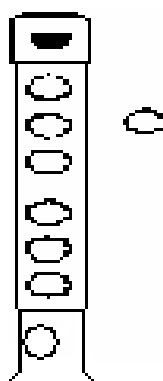
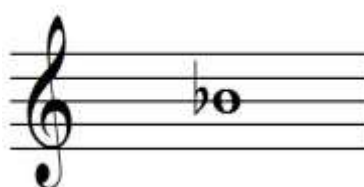
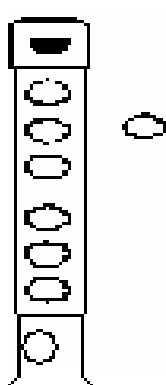


Continuación:



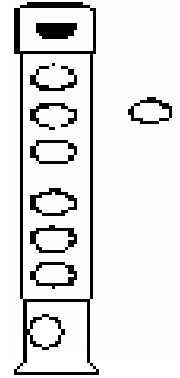
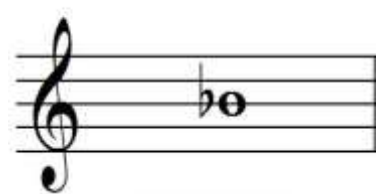
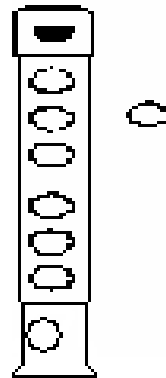
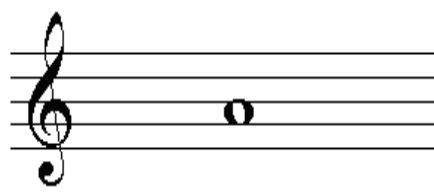
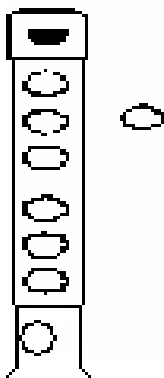
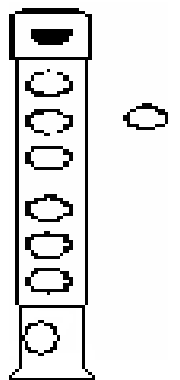
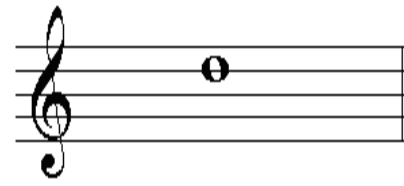
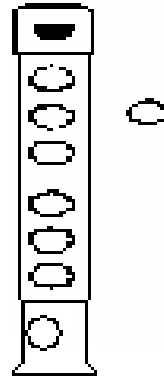
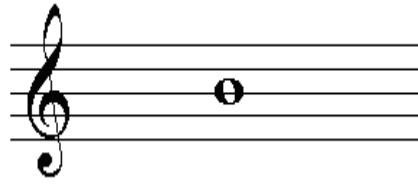
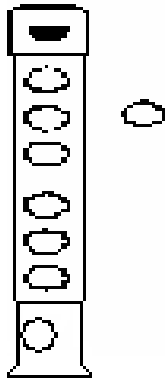
## EL SIb Y EL FA# EN LA FLAUTA DULCE SOPRANO:

Indica en los orificios de la flauta Dulce las notas representadas en los pentagramas:





Continuación:



# Ejercicios Preparatorios

FLAUTA DULCE

## EJERCICIO 1



## EJERCICIO 2



## EJERCICIO 3



## EJERCICIO 4



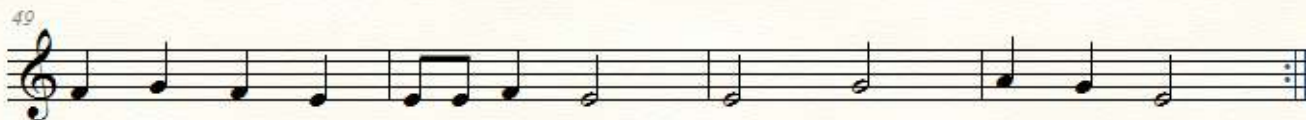
## EJERCICIO 5



EJERCICIO 6



EJERCICIO 7



EJERCICIO 8



EJERCICIO 9



EJERCICIO 10



EJERCICIO 11

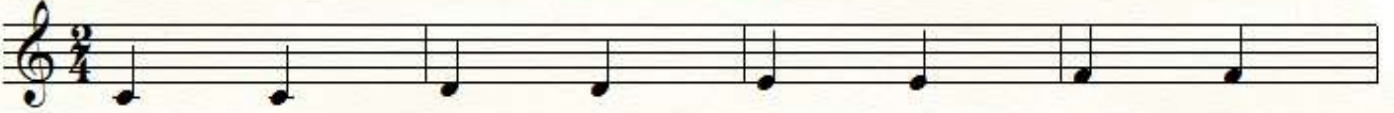


I.A.J.J Thomson -- Coordoinación de Música

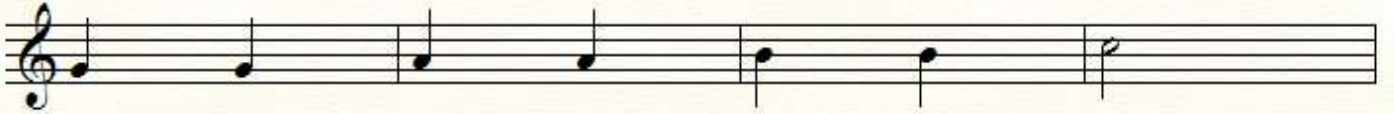


### EJERCICIO 12

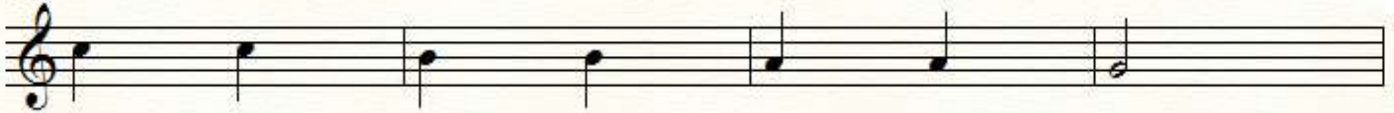
93



97



101



105



### EJERCICIO 13

109



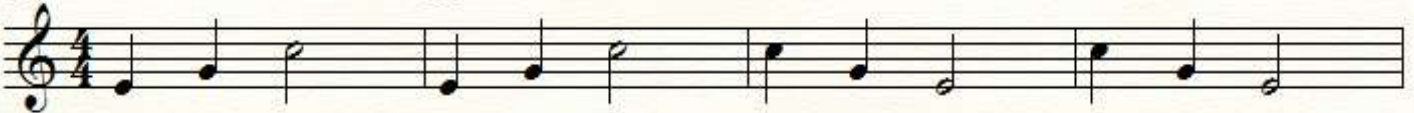
113



### EJERCICIO 14

117

118



121



# Niño Lindo

Score

The musical score for "Niño Lindo" is written in G major (one sharp) and 2/4 time. It consists of six staves of music. The first four staves show a melodic line with a triplet of eighth notes in the third measure of each staff. The fifth and sixth staves show a more complex melodic line with triplets of eighth notes in the first, third, and fifth measures.

# The First Noel

Flauta

7

5

9

13

18

22 *To Coda* ⊕

26 1. 2. *D.S. al Coda* 7

30 ⊕ Coda 8

Detailed description: The image shows a musical score for a flute part. It consists of eight staves of music. The first staff is labeled 'Flauta' and starts with a treble clef, a 3/4 time signature, and a key signature of one flat. A fermata with the number '7' is placed over the first measure. The music begins with a whole rest, followed by a quarter rest, then a quarter note G4, a quarter note A4, and a quarter note B4. A repeat sign with a double bar line and a repeat sign follows. The second staff starts with a fermata '5' over the first measure, which contains a quarter note G4. The third staff starts with a fermata '9' over the first measure, which contains a quarter note G4. The fourth staff starts with a fermata '13' over the first measure, which contains a quarter note G4. The fifth staff starts with a fermata '18' over the first measure, which contains a quarter note G4. The sixth staff starts with a fermata '22' over the first measure, which contains a quarter note G4. The seventh staff starts with a fermata '26' over the first measure, which contains a quarter note G4. It includes first and second endings. The eighth staff starts with a fermata '30' over the first measure, which contains a quarter note G4. It includes a Coda symbol and a fermata '8' over the final measure.

# EL INCA BAILA

Musical score for 'EL INCA BAILA' in common time (C). The score consists of three staves. The first staff begins with a treble clef, a common time signature, and a measure rest marked with a '4'. It then contains a melodic line with eighth and sixteenth notes, including a slur over the final two measures. The second staff continues the melody with similar rhythmic patterns. The third staff concludes the piece with a final measure rest marked with a '2' and a double bar line with repeat dots.

# Coconuts

Musical score for 'Coconuts' in 4/4 time. The score consists of four staves. The first staff begins with a treble clef, a 4/4 time signature, and a measure rest marked with an '8'. It contains a simple melodic line with quarter and eighth notes. The second staff continues the melody. The third and fourth staves provide a harmonic accompaniment with a steady bass line of quarter notes. The piece ends with a final measure rest marked with a '2' and a double bar line with repeat dots.

I.A.J.J Thomson -- Coordinación de Música



# Viejo Texas



# Petit air baroque



# La Donna e mobile

de la ópera "Rigoletto"

G. VERDI



# Maudit sos-tu carillonneur

Musical score for 'Maudit sos-tu carillonneur' in G major, 4/4 time. The score consists of three staves. The first staff begins with a '2' above the staff, indicating a second ending. The second staff contains a series of eighth and sixteenth notes. The third staff concludes with a double bar line and a '2' above the staff, indicating a second ending.

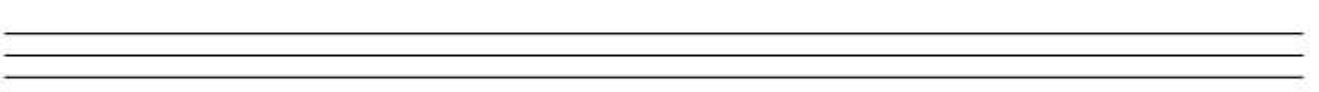
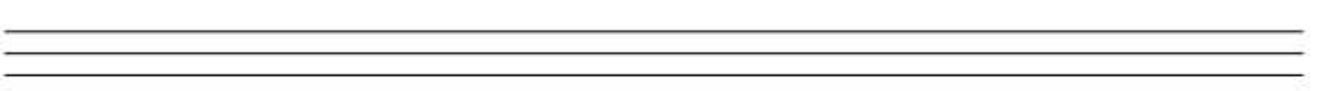
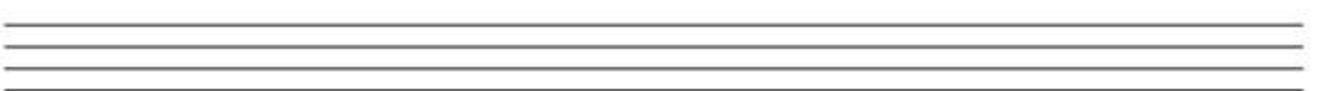
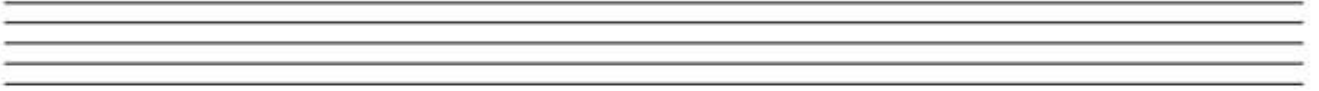
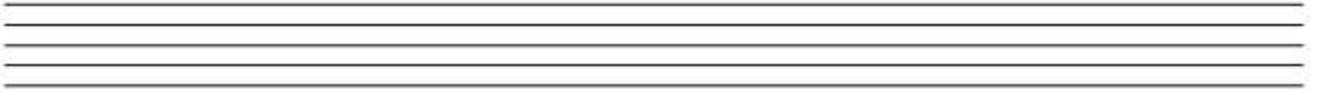
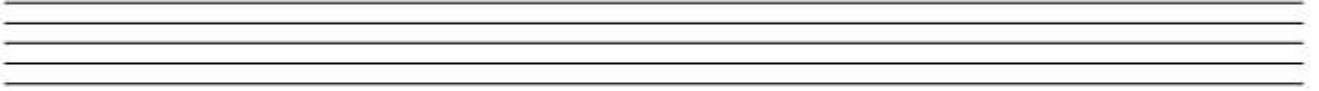
# J'ai du bon tabac

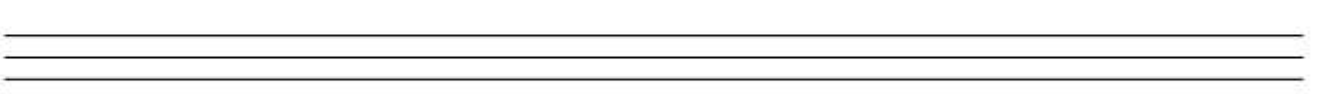
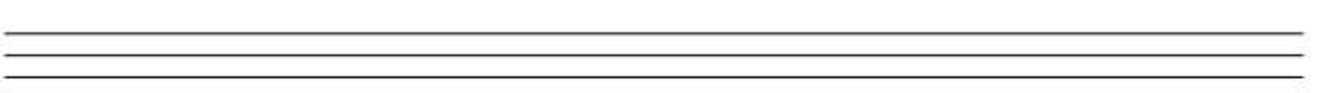
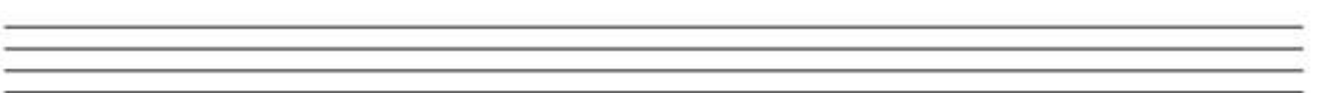
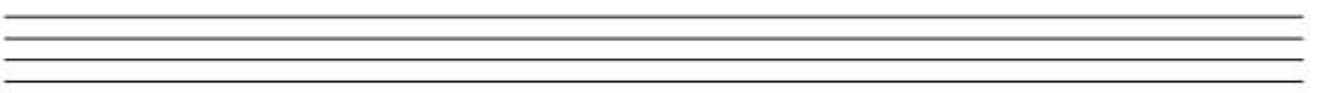
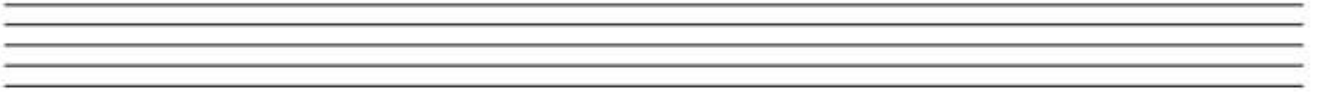
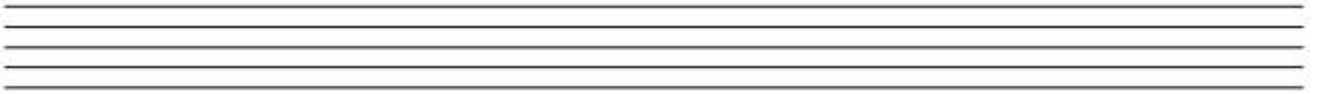
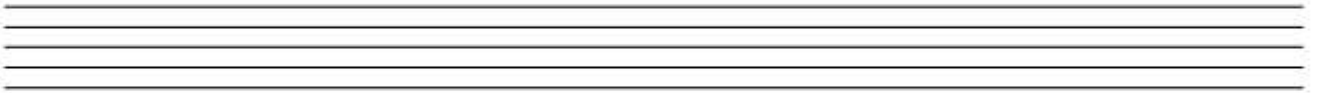
Musical score for 'J'ai du bon tabac' in G major, 2/4 time. The score consists of three staves. The first staff begins with a '6' above the staff, indicating a sixth ending. The second staff is labeled '3ra Vez: Fin' above it. The third staff is labeled 'Da Capo' above it.

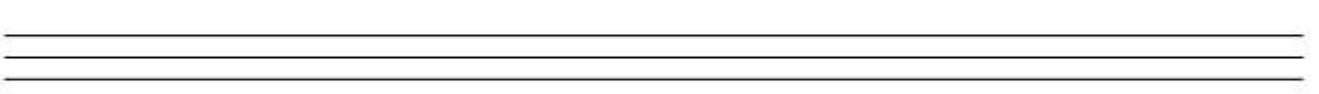
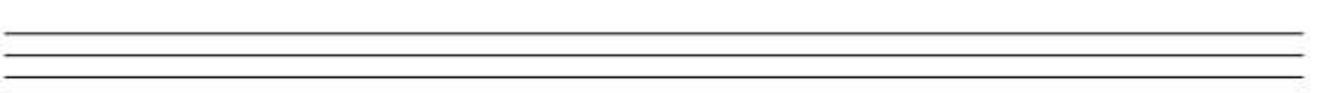
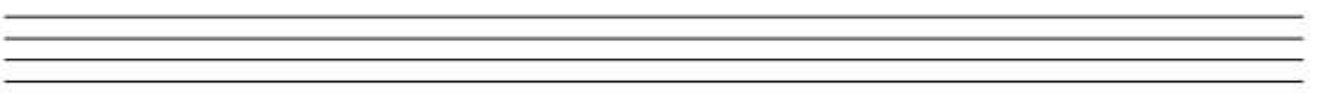
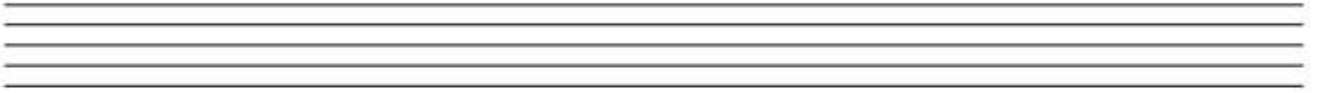
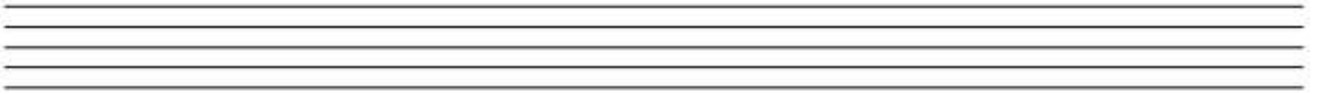
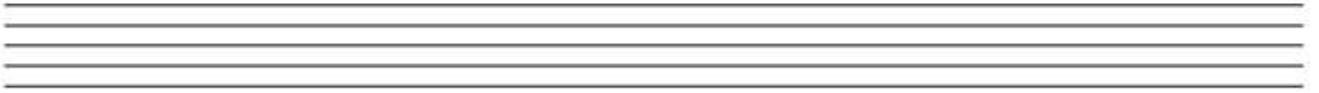
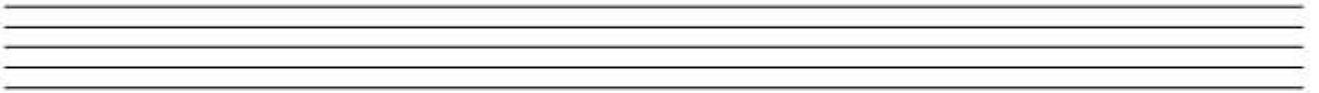


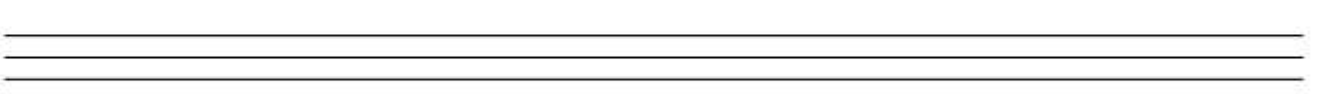
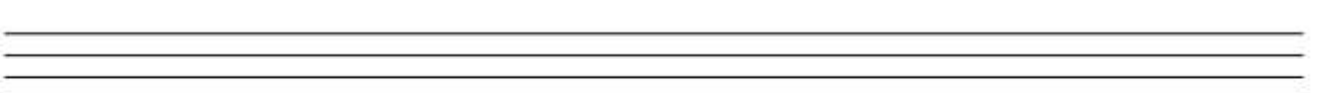
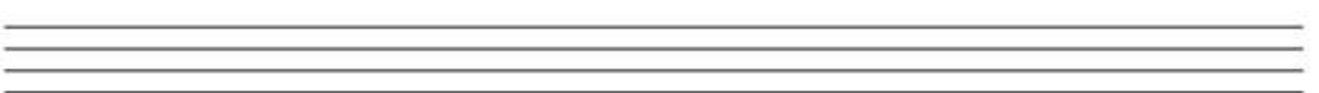
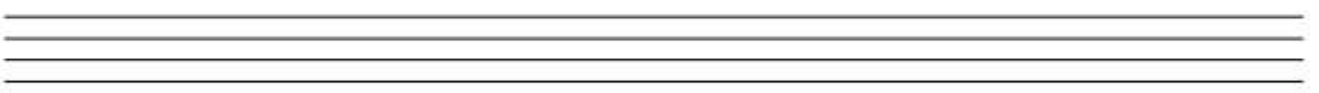
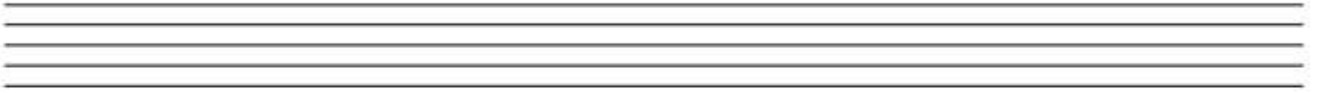
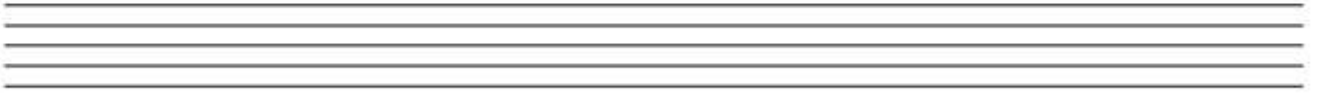
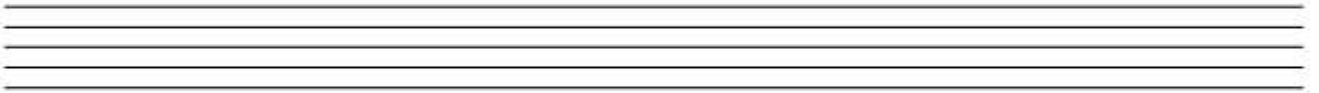
### *Recuerda:*

- ✓ Coloca la fecha en cada ejercicio realizado
- ✓ No dejes pentagramas ni páginas vacías entre cada actividad
- ✓ Procura el orden y pulcritud al trabajar
- ✓ Trae siempre este cuaderno a clases











# HOJAS DE NOTAS

